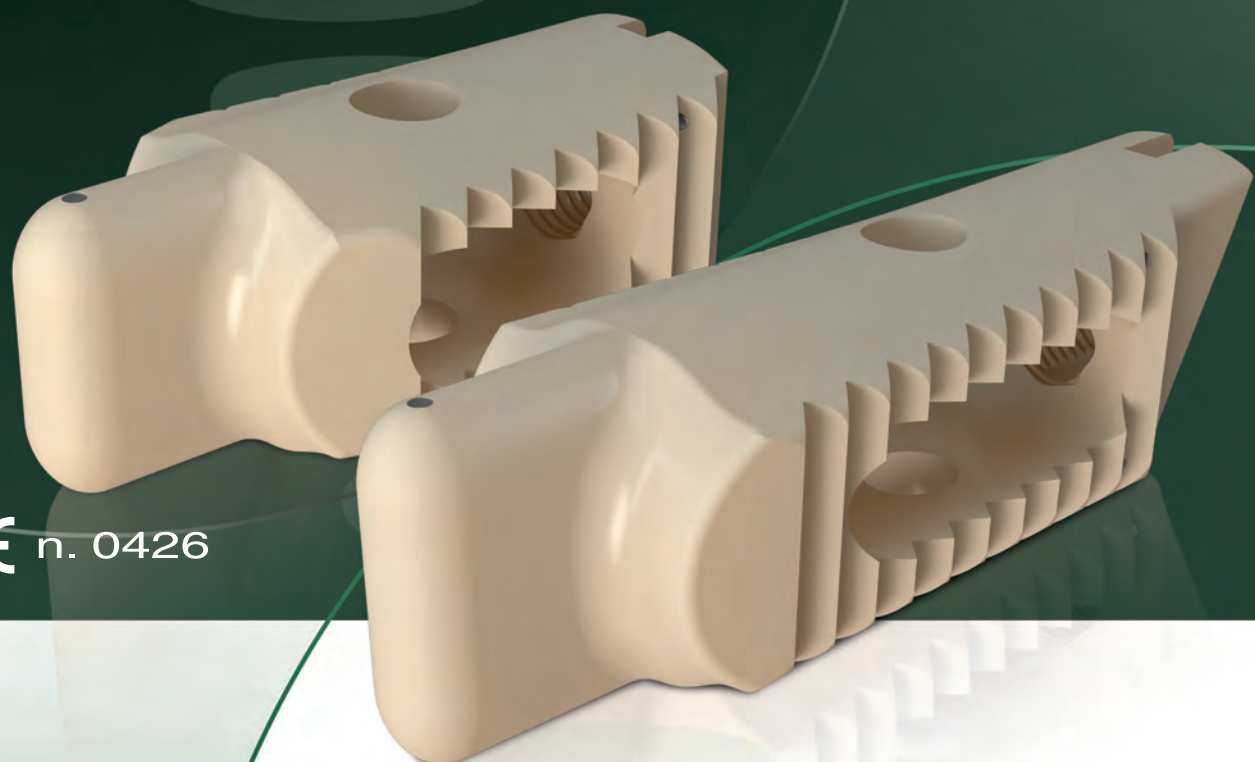


TUYRA | PEEK

The innovative impact-free lumbar cage for a quick and easy insertion coupled with a very precise positioning



CE n. 0426

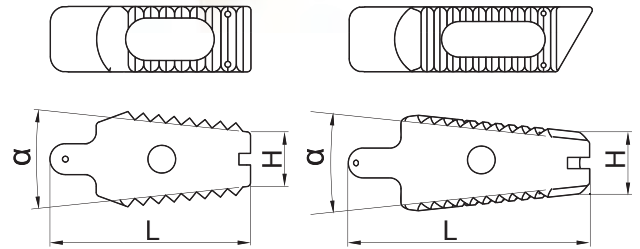
Features & Benefits

- **TUYRA unique design allows:**
 - **Impact-Free cage insertion:** exclusive patented rotate and push technique.
 - **Simple insertion process:** easy to use instrument (inserter) to introduce, advance and place the cage.
 - **Cage orientation inside the spine always under control:** insertion process further simplified by the presence of a mock cage on inserter handle to identify in any moment the cage orientation.
 - **Easy adjustment in case of need:** cage advancement through smooth sliding surfaces.
- **PLIF and Posterior OBLIQUE cage designs:** conceived to fit with physician's preferential approach.
- **Wide cage portfolio:** a variety of lengths and lordotic angles ensure the availability of the exact cage measure to be implanted.



Technical Data

- ✓ Material = PEEK
- ✓ Cage imprint = Broad surface for maximum stability with standard cavity for bone-graft
- ✓ Cage designs = PLIF and Posterior OBLIQUE
- ✓ Implantation approach = Rotation and push technique
- ✓ Lengths = 26 & 30 (PLIF); 32 & 35 (Posterior OBLIQUE)
- ✓ Heights = 6, 7, 8, 9, 10, 11, 12 (PLIF); 5, 6, 8, 10, 12 (Posterior OBLIQUE)
- ✓ Lordotic angles = 0°, 6°, 12° (PLIF); 6°, 12°, 18° (Posterior OBLIQUE)



PLIF (REF)	H back (mm)	L (mm)	α
P062600P	6	26	0°
P062606P			6°
P062612P			12°
P072600P	7		0°
P072606P			6°
P072612P			12°
P082600P	8		0°
P082606P			6°
P082612P			12°
P092600P	9		0°
P092606P			6°
P092612P			12°
P102600P	10	0°	
P102606P		6°	
P102612P		12°	
P112600P	11	0°	
P112606P		6°	
P112612P		12°	
P122600P	12	0°	
P122606P		6°	
P122612P		12°	

PLIF (REF)	H back (mm)	L (mm)	α
P063000P	6	30	0°
P063006P			6°
P063012P			12°
P073000P	7		0°
P073006P			6°
P073012P			12°
P083000P	8		0°
P083006P			6°
P083012P			12°
P093000P	9		0°
P093006P			6°
P093012P			12°
P103000P	10	0°	
P103006P		6°	
P103012P		12°	
P113000P	11	0°	
P113006P		6°	
P113012P		12°	
P123000P	12	0°	
P123006P		6°	
P123012P		12°	

OBLIQUE (REF)	H back (mm)	L (mm)	α
O053206P	5	32	6°
O053212P			12°
O053218P			18°
O063206P	6		6°
O063212P			12°
O063218P			18°
O083206P	8		6°
O083212P			12°
O083218P			18°
O103206P	10		6°
O103212P			12°
O103218P			18°
O123206P	12	6°	
O123212P		12°	
O123218P		18°	

OBLIQUE (REF)	H back (mm)	L (mm)	α
O053506P	5	35	6°
O053512P			12°
O053518P			18°
O063506P	6		6°
O063512P			12°
O063518P			18°
O083506P	8		6°
O083512P			12°
O083518P			18°
O103506P	10		6°
O103512P			12°
O103518P			18°
O123506P	12	6°	
O123512P		12°	
O123518P		18°	

